

**Observer**

DAY: 11:35 AM Mon 02/02/15 71°

AUTO FAN HOLD SETUP

MODE FAN HOLD SETUP

**Features and Benefits**

- Advanced microprocessor technology
- Remote access with Wi-Fi capability\*
- Color screen and graphics
- Capable of controlling temperatures and fan speeds in up to six zones
- Compact and modern design
- Thief fail system management capable
- 7-day temperature control throughout the day and week
- Add Smart Recovery for comfort and economy
- Easy-to-use functions
- On-screen system diagnostics when installed as part of a complete Observer communicating system
- Humidity control
- Constant ON fan options
- Auto chargeover between heating and cooling
- Advanced system diagnostics intelligence capable
- Lighted display
- Four-wire installation (plus daughter board option)
- Four-stage heat / two-stage cool

**PRODUCT SPECIFICATIONS** Gas Furnace 69MVE

Model Size	24	36	48	60
Minimum Cooling Capacity (BTU/hr)	24,000	36,000	48,000	60,000
SEER Rating	17.0	17.0	16.0	16.0
SEER Rating - High Stage (HSA)	17.0	17.0	16.0	16.0
SEER Rating - Low Stage (LSA)	17.0	17.0	16.0	16.0
SEER Rating - Full Load (FL)	17.0	17.0	16.0	16.0
SEER Rating - Full Load (FL) - High Stage (HSA)	17.0	17.0	16.0	16.0
SEER Rating - Full Load (FL) - Low Stage (LSA)	17.0	17.0	16.0	16.0
SEER Rating - Full Load (FL) - Full Load (FL)	17.0	17.0	16.0	16.0

**PHYSICAL DATA**

Model Size	24	36	48	60
Height	24.0	36.0	48.0	60.0
Width	24.0	36.0	48.0	60.0
Depth	24.0	36.0	48.0	60.0
Weight	24.0	36.0	48.0	60.0

**HEATING CAPACITY AND BLOWER DATA**

Model Size	24	36	48	60
Heating Capacity (BTU/hr)	24,000	36,000	48,000	60,000
Blower Capacity (CFM)	24,000	36,000	48,000	60,000

**PRODUCT SPECIFICATIONS** Split System Heat Pump 19MVE

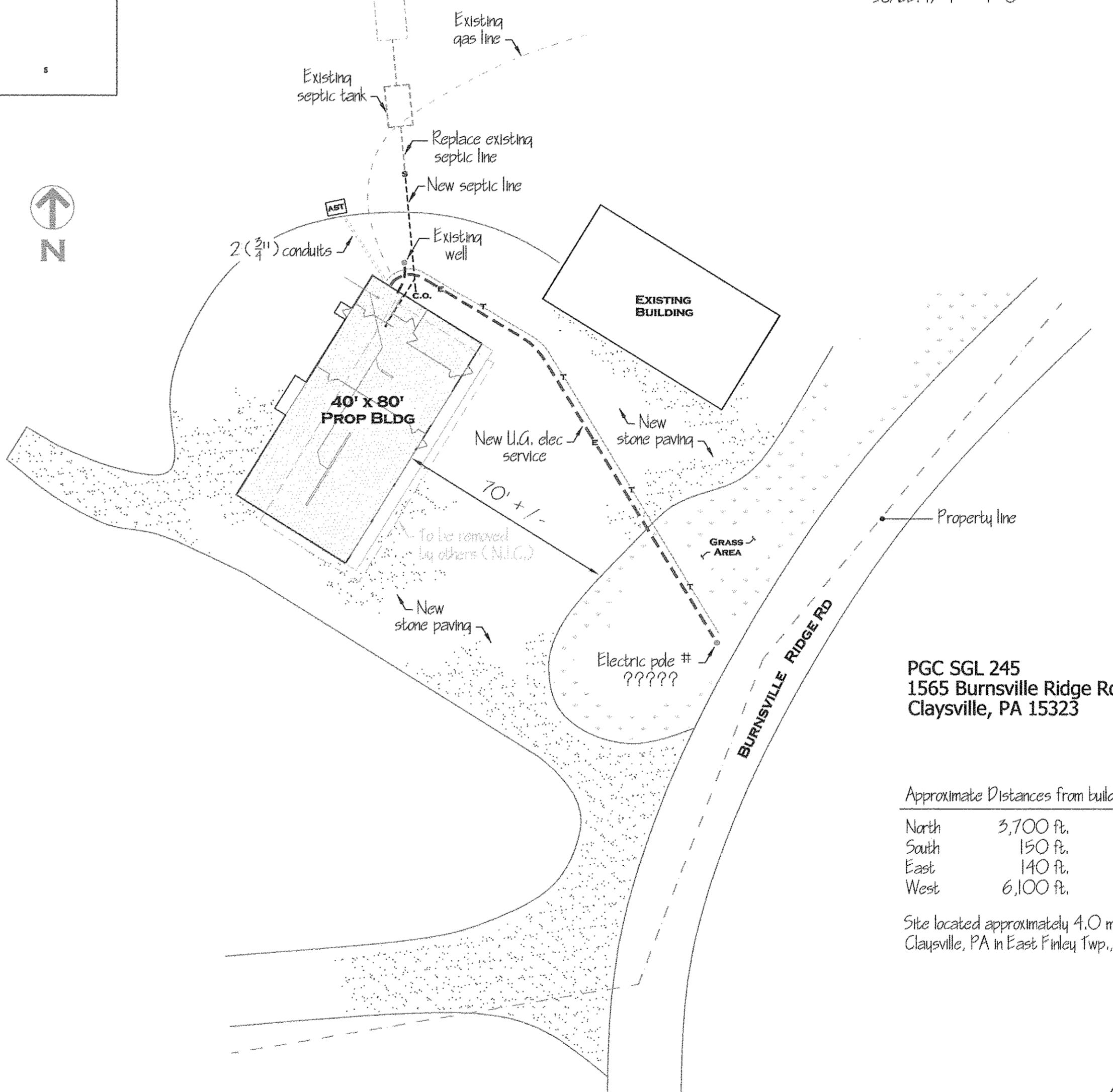
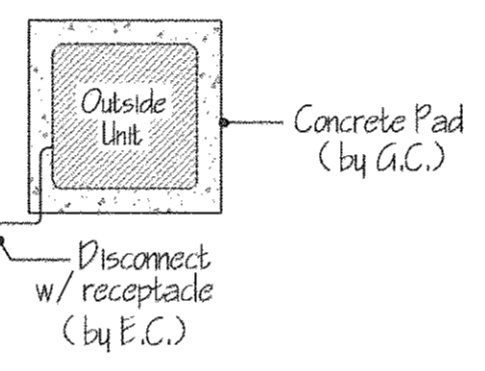
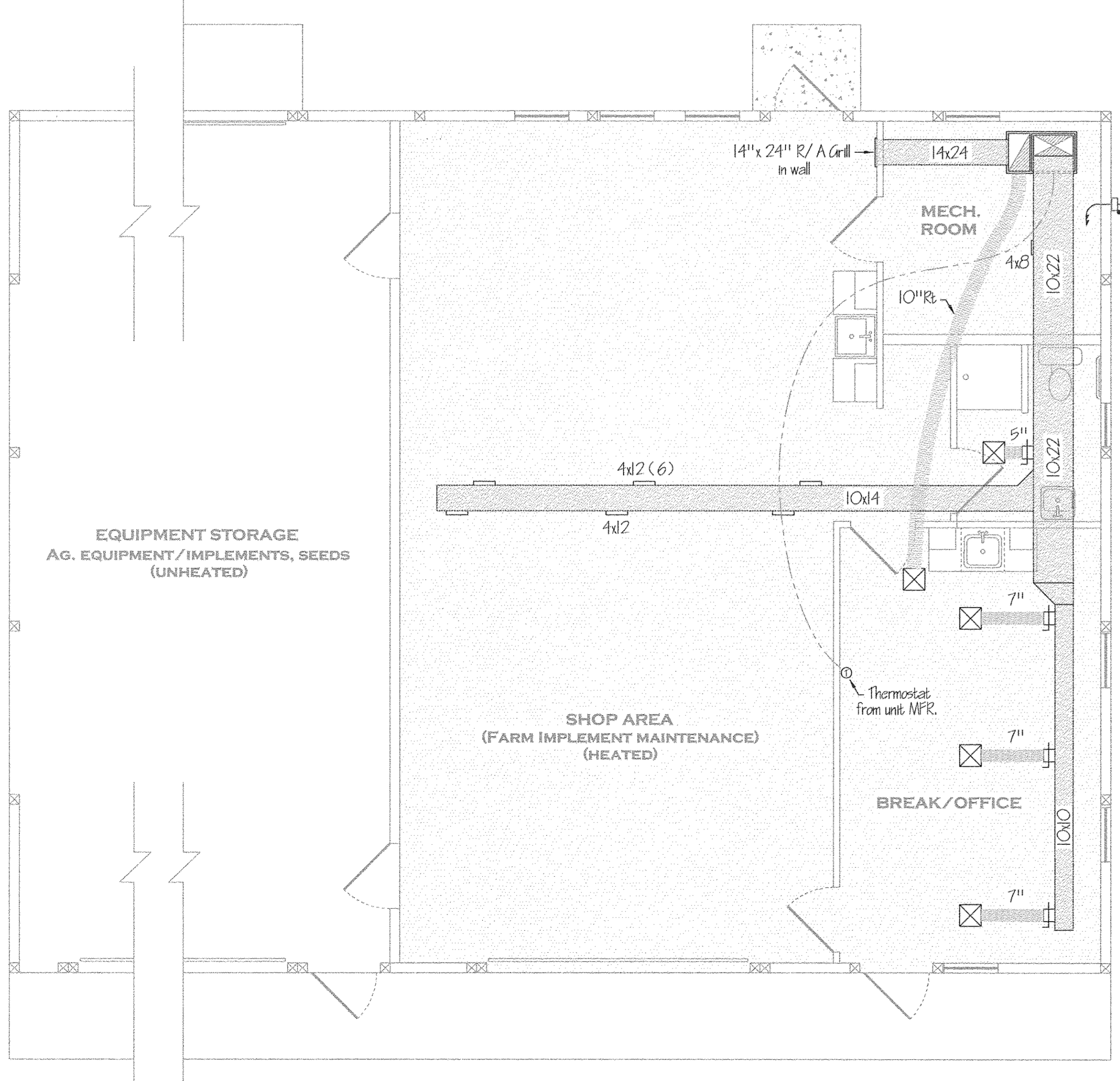
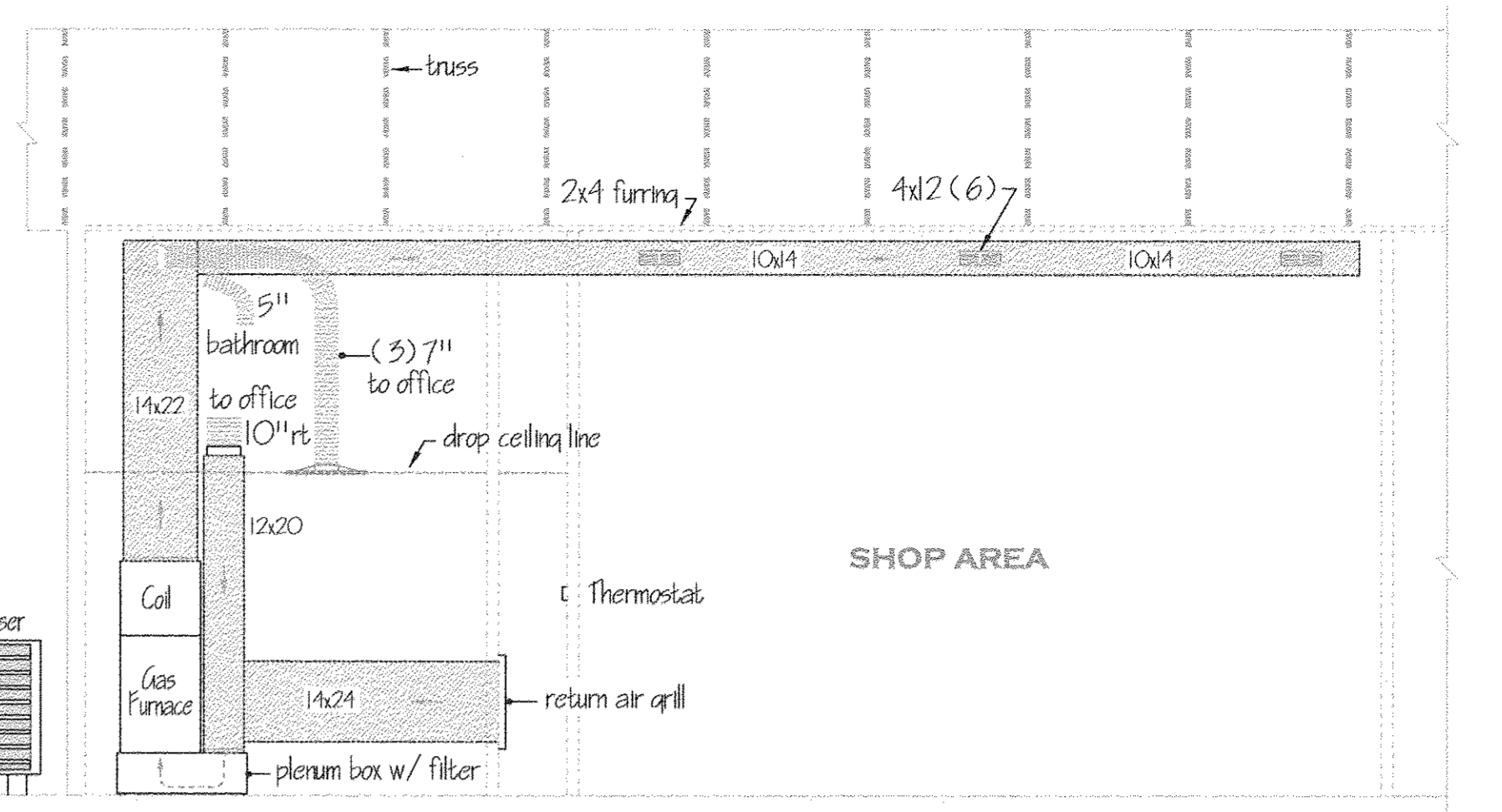
Model Size	24	36	48	60
Minimum Cooling Capacity (BTU/hr)	24,000	36,000	48,000	60,000
SEER Rating	17.0	17.0	16.0	16.0
SEER Rating - High Stage (HSA)	17.0	17.0	16.0	16.0
SEER Rating - Low Stage (LSA)	17.0	17.0	16.0	16.0
SEER Rating - Full Load (FL)	17.0	17.0	16.0	16.0
SEER Rating - Full Load (FL) - High Stage (HSA)	17.0	17.0	16.0	16.0
SEER Rating - Full Load (FL) - Low Stage (LSA)	17.0	17.0	16.0	16.0
SEER Rating - Full Load (FL) - Full Load (FL)	17.0	17.0	16.0	16.0

**PHYSICAL DATA**

Model Size	24	36	48	60
Height	24.0	36.0	48.0	60.0
Width	24.0	36.0	48.0	60.0
Depth	24.0	36.0	48.0	60.0
Weight	24.0	36.0	48.0	60.0

**HEATING CAPACITY AND BLOWER DATA**

Model Size	24	36	48	60
Heating Capacity (BTU/hr)	24,000	36,000	48,000	60,000
Blower Capacity (CFM)	24,000	36,000	48,000	60,000

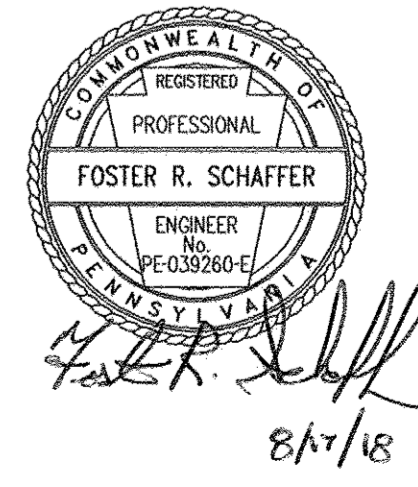


PGC SGL 245  
1565 Burnsville Ridge Rd.  
Claysville, PA 15323

Approximate Distances from building to property line

North	3,700 ft.
South	150 ft.
East	140 ft.
West	6,100 ft.

Site located approximately 4.0 miles south of Claysville, PA in East Finley Twp., Washington County.



- NOTE:
- LAYOUT OF DUCTS, DUCT SIZES AND DIFFUSERS ARE MEANT TO BE USED AS A GUIDELINE. ACTUAL RUNS, SIZES AND LOCATIONS TO BE DETERMINED BY MANUFACTURER'S MODEL. THE FOLLOWING STEPS SHOULD BE FOLLOWED IN THE DESIGN AND INSTALLATION OF THE HVAC SYSTEM TO ENSURE EFFICIENCY AND COMFORT.
1. DETERMINE ROOM-BY-ROOM AND AIR-FLOWS USING ACCA MANUAL J CALCULATION PROCEDURES. (OR SUBSTANTIALLY EQUIVALENT)
  2. SIZE DUCT SYSTEM ACCORDING TO ACCA MANUAL D CALCULATION PROCEDURES. (OR SUBSTANTIALLY EQUIVALENT)
  3. SIZE HVAC EQUIPMENT TO SENSIBLE LOAD USING ACCA MANUAL S CALCULATION PROCEDURES (OR SUBSTANTIALLY EQUIVALENT).
  4. INSTALL EQUIPMENT & DUCTS ACCORDING TO DESIGN SPECIFICATIONS USING INSTALLATION REQUIREMENTS AND PROCEDURES FROM MANUFACTURERS' SPECIFICATIONS.
  5. INSTALL SO STATIC AIR PRESSURE DROP ACROSS THE AIR HANDLER IS WITHIN MANUFACTURER AND DESIGN SPECIFICATIONS.
  6. PROVIDE BALANCED AIR FLOWS BETWEEN SUPPLY AND RETURN SYSTEMS TO MAINTAIN NEUTRAL PRESSURE.
  7. EQUIPMENT AND ASSOCIATED ITEMS MUST BE APPROVED BY PGC HARRISBURG ENGINEERING DIVISION BEFORE START OF INSTALLATION.
- HEAT PUMP TO BE A HEIL 4 TON HCH48GKA OUTSIDE CONDENSER WITH INDOOR GAS FURNACE 69MVE I002 20A TWO STAGE AND COIL END448L2 1A UPFLOW (OR SUBSTANTIALLY EQUIVALENT). OUTSIDE UNIT IS TO BE A TWO STAGE SCROLL COMPRESSOR AND MATCHED TO INSIDE UNIT W/ VARIABLE SPEED MOTOR TO PROVIDE OPTIMUM EFFICIENCY. STAT IS TSTAT0201 CW OBSERVER W/ WIFI.

PENNSYLVANIA GAME COMMISSION		
STATE GAME LANDS #245	EAST FINLEY TWP.	WASHINGTON CO.
HVAC DETAILS and SITE PLAN		
REVISIONS	PROJECT NO.	PCC-245-18-2
	DRAWING NO.	245-HVAC-5
	DRAWN BY:	JBM
	DATE:	08-16-18
	SHEET NO.	5 OF 5